

*vari***atec**

Software based on SAP Business One

Brochure BX LMS

SAP[®] Certified
SAP Business One Integration





SAP Business One for Logistics Management

SAP Business One and variattec BX LMS (Logistic Management System) offers an unparalleled combination of functionality for companies with complex warehousing or large numbers of stock movements. Larger warehouses and distribution centers have long enjoyed the benefits of logistic management systems, but improving the efficiency of warehouses used to mean a large investment. Not anymore: now, small and medium sized companies can benefit from smart technology and streamlined processes that increase productivity, reduce costs and shorten fulfillment times. variattec BX LMS makes the difference. It offers standard technology, easy installation, guided configuration and a robust platform to help control costs.

With SAP Business One for Logistic Management storage locations can be easily defined for each warehouse. A location within a warehouse is identified with up-to four coordinates, to identify for example Zone, Aisle, Bay and Shelf. The quantity of any item can be distributed to multiple storage locations in the warehouse, with predefined put-away preferences for each product. Where put-away is not immediate (e.g. to accommodate receipt to dock, or quality inspection processes) the system keeps track of the 'unlocated' line items and the bin locations may be defined during the put-away process by appropriate warehouse personnel. When an inventory transaction is performed in SAP Business One, variattec BX LMS allows the user to define source and target locations for the items in the transaction, with multiple source and target locations for any line item of a document as required. Since inventory counting is significantly different for warehouses with bin locations, a sophisticated multi-phase physical inventory counting module is included in the software. Default locations for incoming and simple source-detection logic for outgoing transactions make inventory and location management simple. Every location event is auditable with a sophisticated journaling subsystem delivering full traceability and complete integration with SAP Business One through to the Pick-and-Pack and delivery processes. Every transaction can be executed using mobile hand held barcode terminals for greater accuracy and efficiency.

SAP Business One for LMS suits companies with:

Complex warehousing
Large numbers of stock movements



Key Benefits

- **Storage locations within warehouses**
- **Consignment handling**
- **Up-to four coordinates per location**
- **Multi-phase source and target locations per line item**
- **Two stage bin location definition logic**
- **Tracking of 'unlocated' document lines**





Functionality of SAP Business One for LMS

Multi dimensional storage locations

Every warehouse can have different area codes and for each area code you can have 3 additional location dimensions (X, Y, Z) for complete warehouse mapping.

Storage locations

Every storage location is a separate entity with its own properties, including: Location Type (pick or reserve), Location Class Code (for location capacity management), Single item/batch control, Accessibility (A, B, C), and Partner Code (locations for business partners). This enables picking efficiencies for fast/slow moving stock, storage control based on volumes, and auditable control of mixed or separate batches depending on the user determined preferences.

Storage location capacity

Storage location capacity is managed through location classes. Capacity management is optional and can be enabled separately for any storage location to match stock item volumes to available location capacities.

Storage location stocks

Storage location stocks are fully integrated with stock management in SAP Business One. This allows stock in a location to be reserved when a sales order is placed for instance, or against any planned inventory move transaction. Available To Promise figures are maintained to show stock reservations, delivering a full and accurate real time picture of your inventory.

Picking process

The picking process is fully integrated, and picking should be performed on storage location level. Transactions can be recorded with computer terminals or mobile devices (variatec BX Mobile LMS) on hand held terminals, truck mounted terminals, or mobile tablets.

Storage recommendations

Storage recommendations are calculated in the background by the system, according to customer specific rules. Three kinds of recommendations are supported: incoming, refill and picking. All recommendations are planned movements that must be validated before being processed, enabling automation efficiencies while retaining management control.

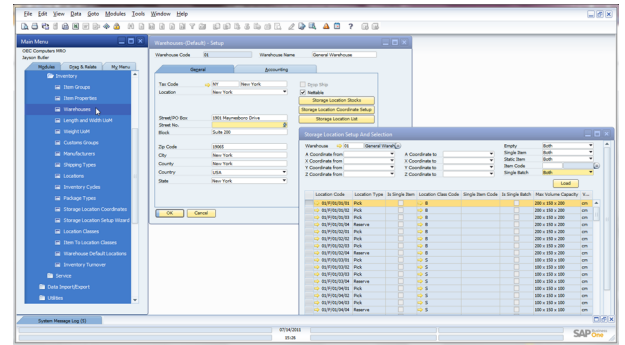
Also available:
variatec BX Mobile Warehouse
variatec BX Mobile LMS



SAP Business One for LMS...

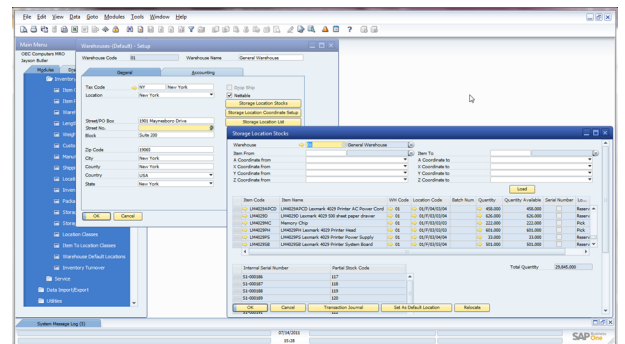
Step 1 Warehouse storage location setup

For each warehouse you can define the different locations. This can be done manually or with a wizard making set-up simple. Per warehouse you can have several area codes and for each area code you can define different locations with multiple dimensions (X,Y,Z) down to shelf and bin level.



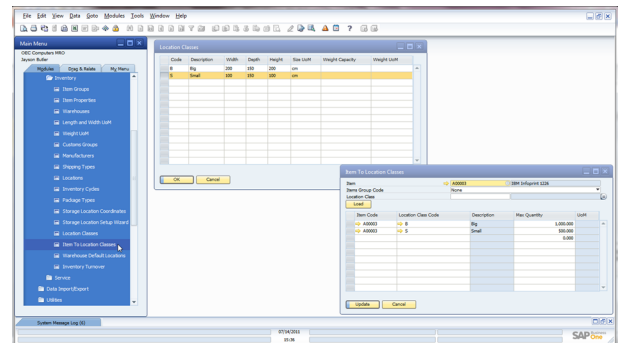
Step 2 Storage location stocks

After the stock locations are defined you can allocate existing stock. Per warehouse you can have an overview of the different stocks. Per item you can see the various locations and if applicable the serial and batch numbers for full traceability.



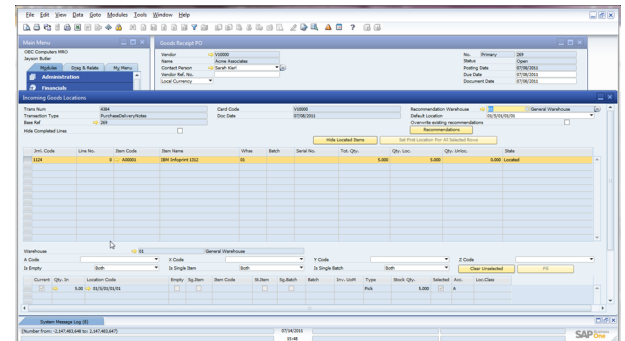
Step 3 Location classes

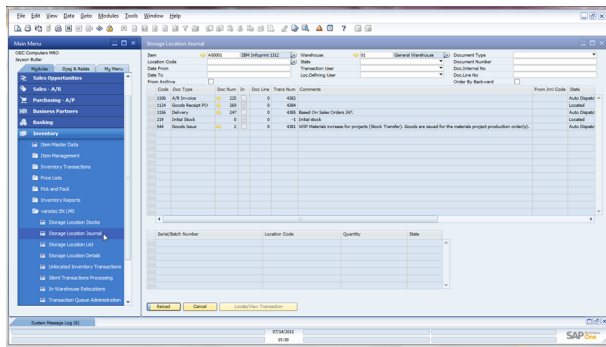
Storage location capacity is managed through location classes. Capacity management is optional and can be enabled separately for each storage location. The maximum capacity of a validated storage location must be defined for all items.



Step 4 Incoming goods locations

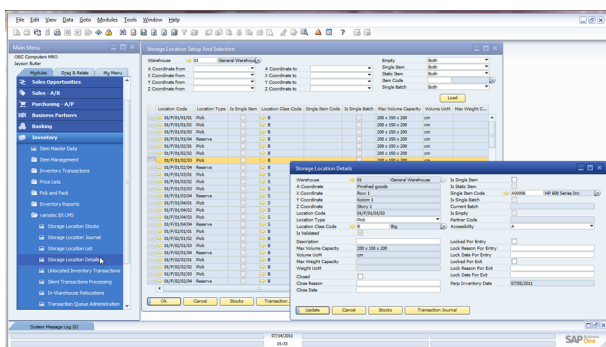
You can either allocate the incoming goods directly on receipt or later. If you allocate the items later the system provides visibility and tools to easily manage unallocated items. With the LMS scenarios you can automate this process, with the system defining preferred put-away locations.





Step 5 Storage location journal

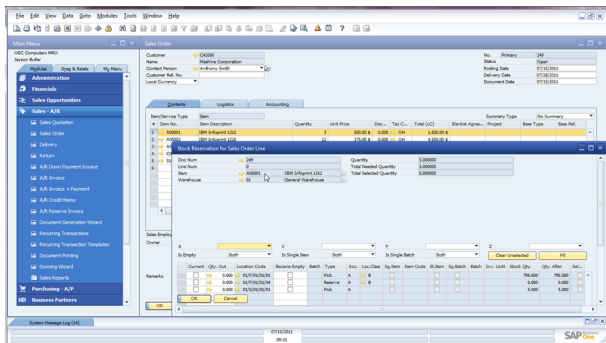
For each item and warehouse you have a complete insight into all inventory transactions, stock movements and associated documents. You can also see what stock is not yet located. All journals are processed in real-time at every relevant transaction.



Step 6 Allocation and overview

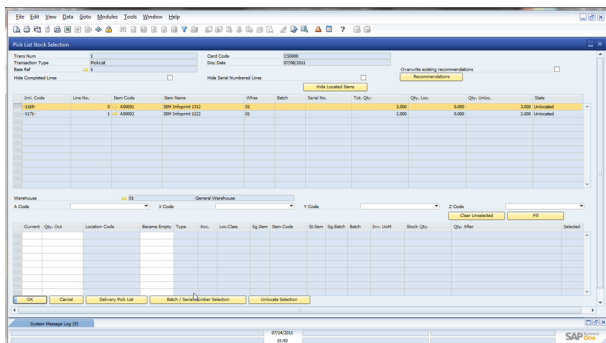
Every storage location is a separate entity with its own properties. The main properties are

- Location Type (pick or reserve)
- Location Class Code (location capacity management)
- Single item and/or single batch
- Accessibility (for A, B or C class items)
- Partner Code, you can have specific storage locations for business partners.



Step 7 Stock reservation

Extending standard SAP Business One functionality, variatec BX LMS enables sales order line stock reservations against quantities, batches and serial numbered items. These reservations are blocked for all other transactions except for this sales order.



Step 8 Pick list stock selection

The picking process is integrated, and picking should be performed on storage location level. With the LMS scenario's the system can define where the goods must come from. Transactions can be recorded with computer terminals or mobile devices (variatec BX Mobile LMS).





About SAP Business One

SAP Business One helps you bring.....

- **Sales**
- **Financial management**
- **Banking**
- **Purchasing**
- **Manufacturing**
- **Inventory management**
- **Customer relationship management**

.....all under one flexible, responsive system.

When you run SAP Business One, you and your staff can:

Get a complete view of your business with a single, accurate source for all critical, up-to-the-minute business data. Give your business users instant access to the right information they need to run the business.

Expand your business and customers with Web-based CRM and e-commerce capabilities. A complete customer view across sales, distribution, and financials helps you uncover new ways to serve your customers faster and better.

Take proactive control of your business through automatic alerts, workflows, and response to key business events and customer needs. Get out of the reactive, time-consuming "fire fighting."

Streamline your operations by seamlessly integrating key business processes such as sales, purchasing, inventory, and financials together out-of-the-box, eliminating redundant data entries and errors.

Support your changing needs with easy-to-use customization tools to tailor SAP Business One to fit your specific business needs and individual user preferences.

Trust in a solution you can count on SAP Business One is offered by SAP, the world's leader in business software solutions, and delivered by a global network of certified partners that provide local customer service and support.



variatic

Software based on SAP Business One

About variatic AG

variatic AG produces ERP solutions based on SAP Business One. variatic software has been developed in close cooperation with SAP and provides complete integration with SAP Business One. variatic AG has more than 450 customers worldwide from a variety of industries.



variatic AG
Hanns-Martin-Schleyer-Strasse 18a
D-47877 Willich
GERMANY
P: +49 (0)215.495.368.0
F: +49 (0)215.495.368.11

variatic
3522 Ashford Dunwoody Rd., #241
Atlanta, GA 30319
P: +1-404.592.6480
USA

M: info@variatic.com
WWW.VARIATEC.COM

© 2011 variatic AG. variatic, the variatic logo and other variatic products and services mentioned herein are trademarks or registered trademarks of variatic AG in Germany, and in several other countries.

© SAP, the SAP logo and other SAP products and services mentioned herein are trademarks or registered trademarks of SAP AG in Germany and in several other countries.

